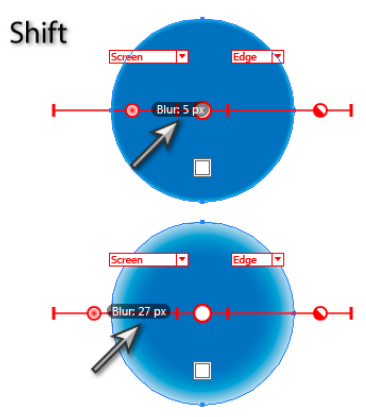




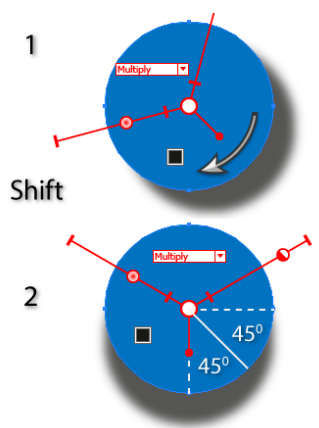
STYLISM

Shift

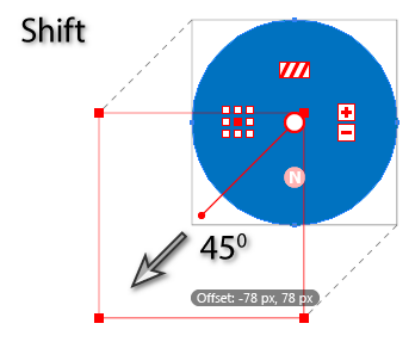
When dragging a slider this will constrain the value to either a whole number or for percentage to the nearest 10% increment



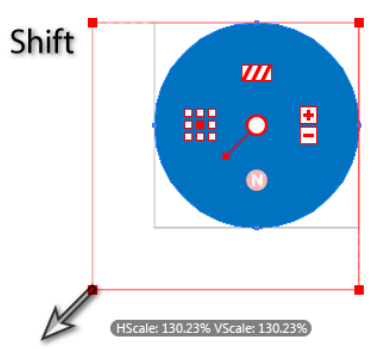
When dragging the Drop Shadow offset control 'Shift' will constrain it to 45° steps around the constrain angle)



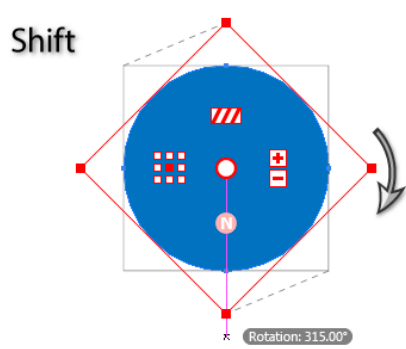
When dragging the Transform bounding box 'Shift' will constrain movement to 45° steps around the constrain angle



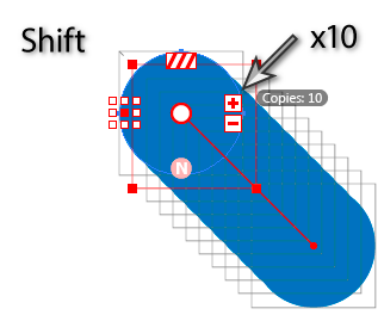
When dragging a corner or side of the Transform bounding box 'Shift' constrains its aspect ratio to its original value.



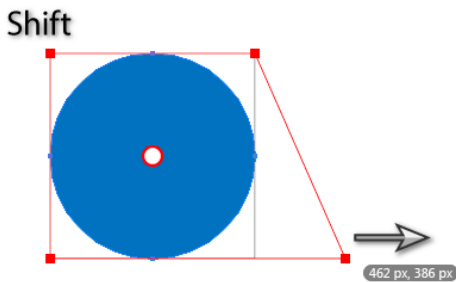
When dragging to rotate the Transform bounding box, 'Shift' constrains the rotation value to 45° steps around the constrain angle.



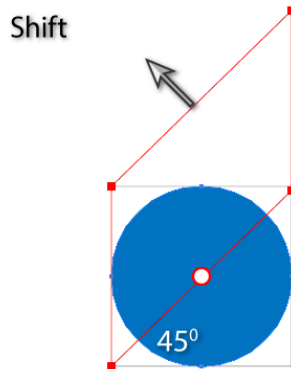
When clicking the Transform Add/Remove Copies buttons, 'Shift' will adjust in multiples of 10.



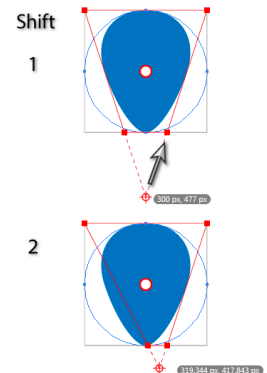
When dragging a Free Distort corner its movement is constrained along the straight lines formed by the original corner position and the adjacent corners



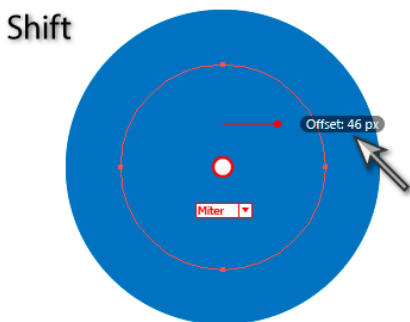
When dragging a Free Distort edge its movement is constrained to 45° steps around the constrain angle



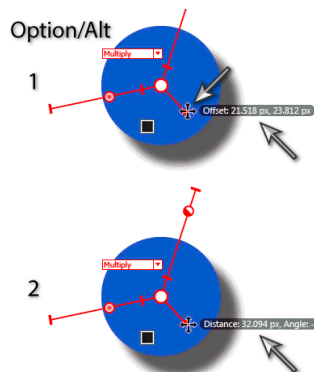
When dragging a Free Distort vanishing point its movement is constrained along the straight lines formed by the original point position and the connected corners



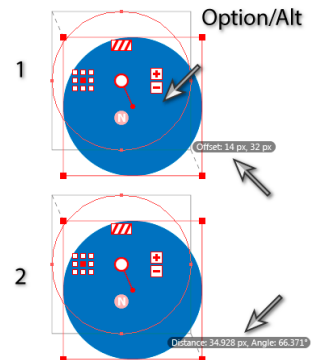
When dragging the Offset Path offset control the value is constrained to whole number increments.



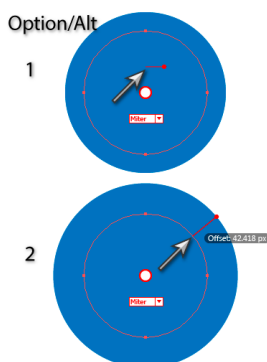
When clicking on the Drop Shadow offset control you can switch between X-Y mode and Distance-Angle mode.



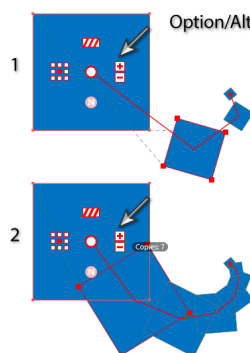
When clicking on the Transform bounding box you can switch between X-Y mode and Distance-Angle mode.



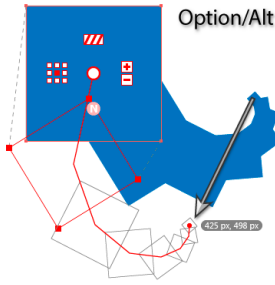
When dragging the origin of the Offset Path offset control 'Option+Alt' allows the control to be positioned anywhere on the artboard, snapping to the affected paths.



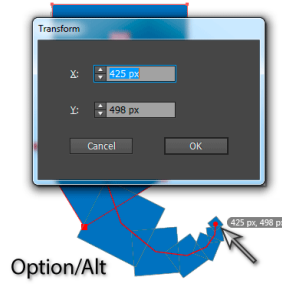
When using the "increment" or "decrement" annotation buttons in the Transform effect, holding down 'Option+Alt' will retain the position, rotation, and scaling of the last copy (except when this is impossible because its position is constrained; this happens when the scaling is set to 100%, either "Reflect X" or "Reflect Y" are checked, and the number of copies changes to an even value).



If 'Option+Alt' is held down when dragging the Transform effect copy chain endpoint indicator, instead of changing the number of copies, the position of the last copy is changed.

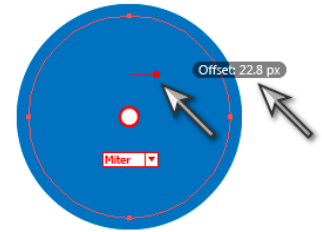


The copy chain endpoint indicator can also be 'Option+Alt' double-clicked to numerically set its position.

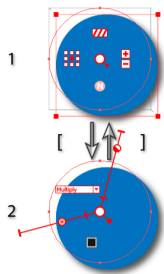


CMD+Ctrl
When dragging most controls when holding down 'CMD+Ctrl', snapping is disabled and "slow-dragging" commences. The speed of the cursor is determined by the factor specified in the preferences, to allow more precise adjustments.

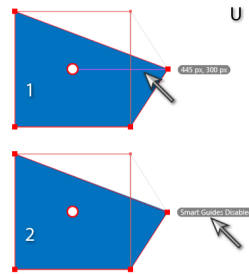
Command/Ctrl



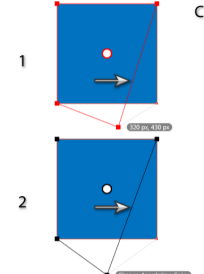
Open and Close square brackets toggles through the effects already applied to the selected object. (note this is only applicable to certain effect controls)



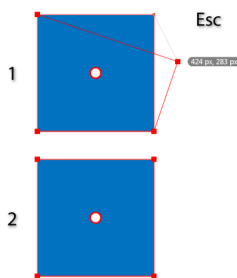
U
The 'U' key can be pressed when dragging with Smart Guides enabled to temporarily disable them (note this is only applicable to certain effect controls).



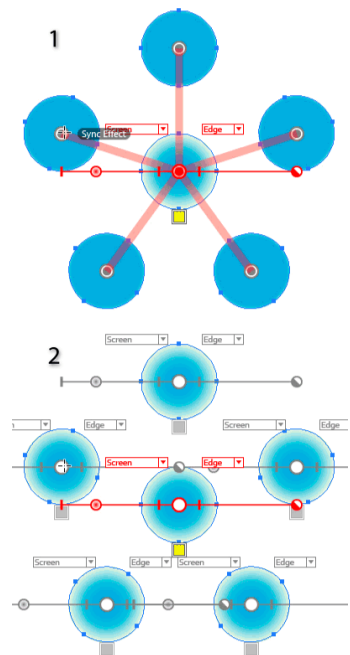
C
The 'C' key can be pressed when the mouse button is down to change the current annotation color.



Esc
The 'Esc' key can be pressed when the mouse button is down to cancel any editing or syncing operation.

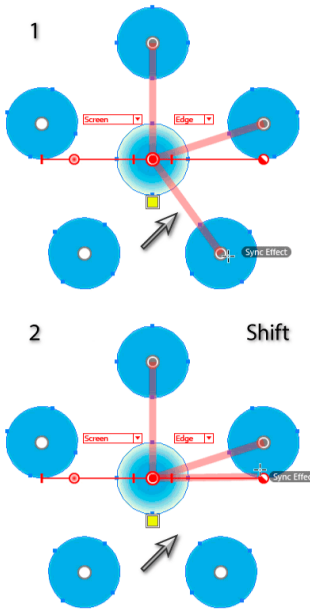


Sync functionality
Dragging from the center of a selected art object (with the Stylism tool) begins the sync function. When the cursor is passed over other selected art objects that have the same effect currently showing, their center circles appear with a dot in them and a line is drawn from the targeted art to their centers, indicating that they will be synced from the targeted art. Releasing the mouse button completes the sync operation.



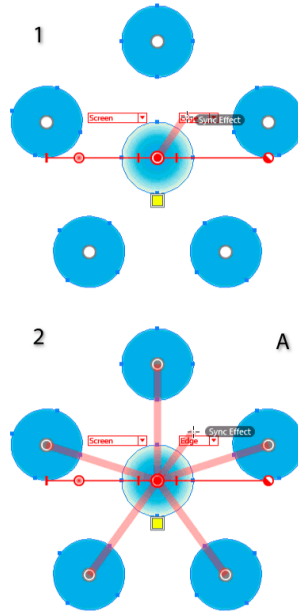
Shift

Holding 'Shift' can remove art which was previously added.



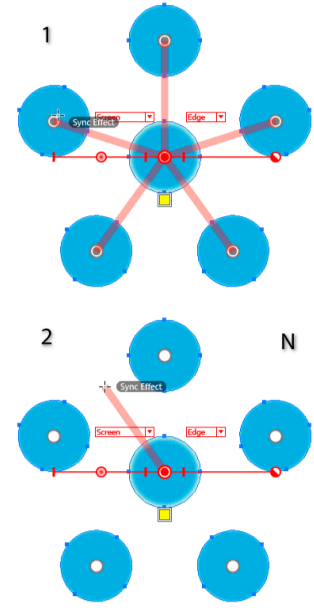
A

When syncing, pressing the 'A' key adds all possible objects which can be synced.



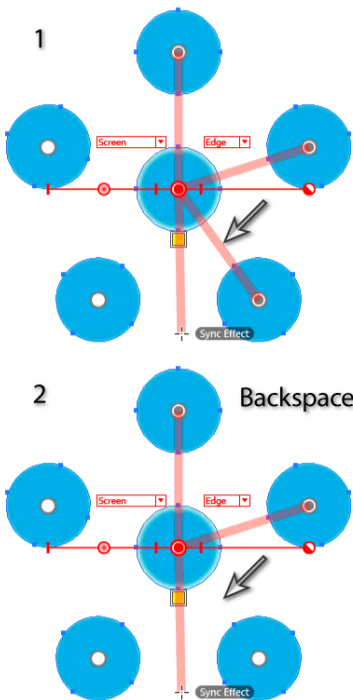
N

When syncing, pressing the 'N' key removes all objects which were previously added.



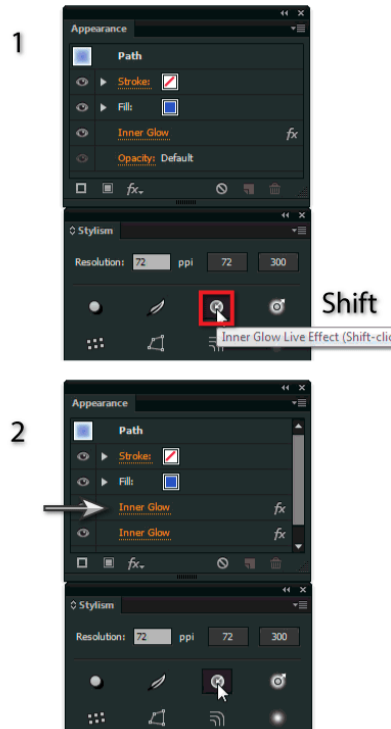
Backspace

Pressing the 'Backspace' key removes the last-added art.

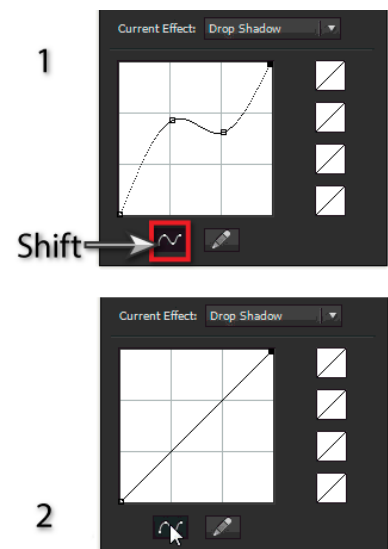


Stylism panel - Shift

When clicking on a depressed Live Effect button, pressing 'Shift', adds another copy of the effect to the targeted art.

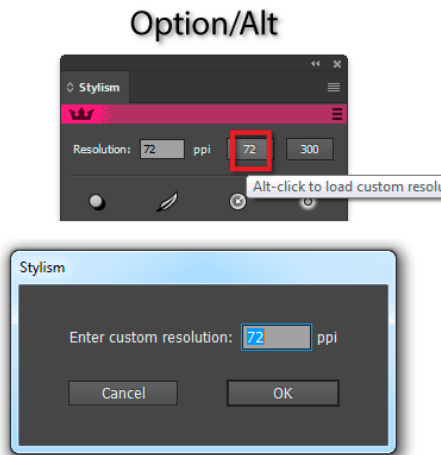


When clicking on the graph Curve Mode button 'Shift' resets the graph to the default linear setting.

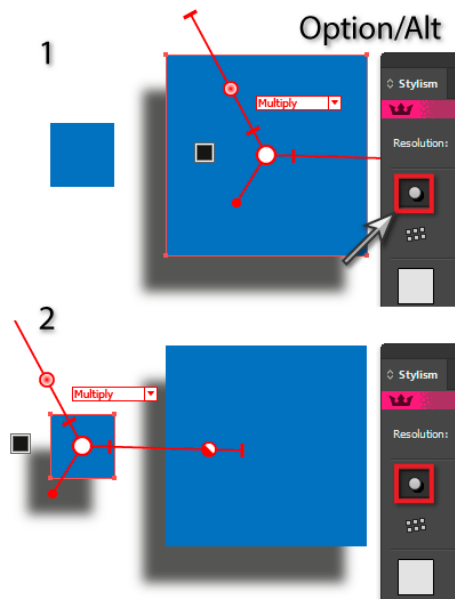


Option/Alt

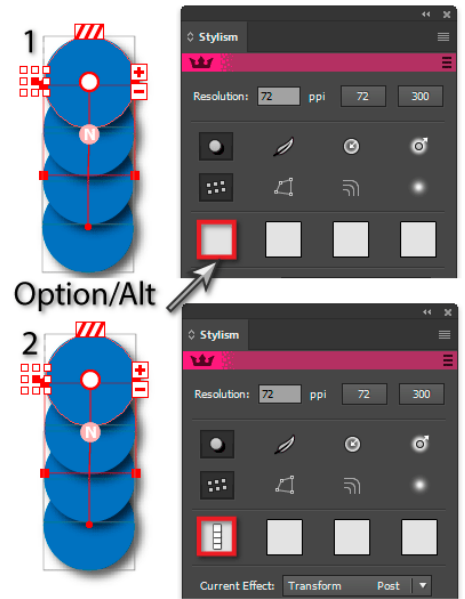
When clicking on a custom resolution button 'Option/Alt' allows you to enter a new resolution to assign to the button.



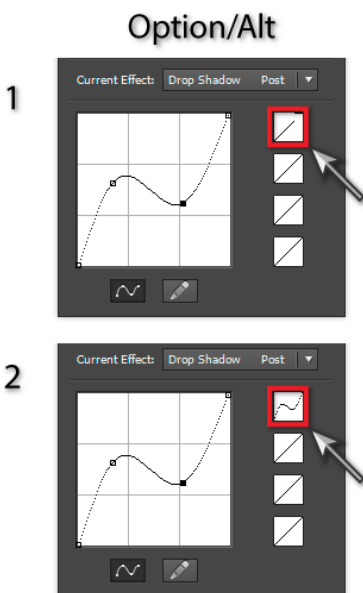
When clicking on a depressed Live Effect button with a single art object selected 'Option/Alt' will set the default parameter for that effect from the art.



When clicking on a User-Defined Favorite button with a single art object selected 'Option/Alt' will apply that effect to the selected art.



When clicking on a contour preset button 'Option+Alt' copies the current contour graph to that button.



CMD+Ctrl
When clicking on a depressed Live Effect button 'CMD+Ctrl' sets the current effect to that effect.

